

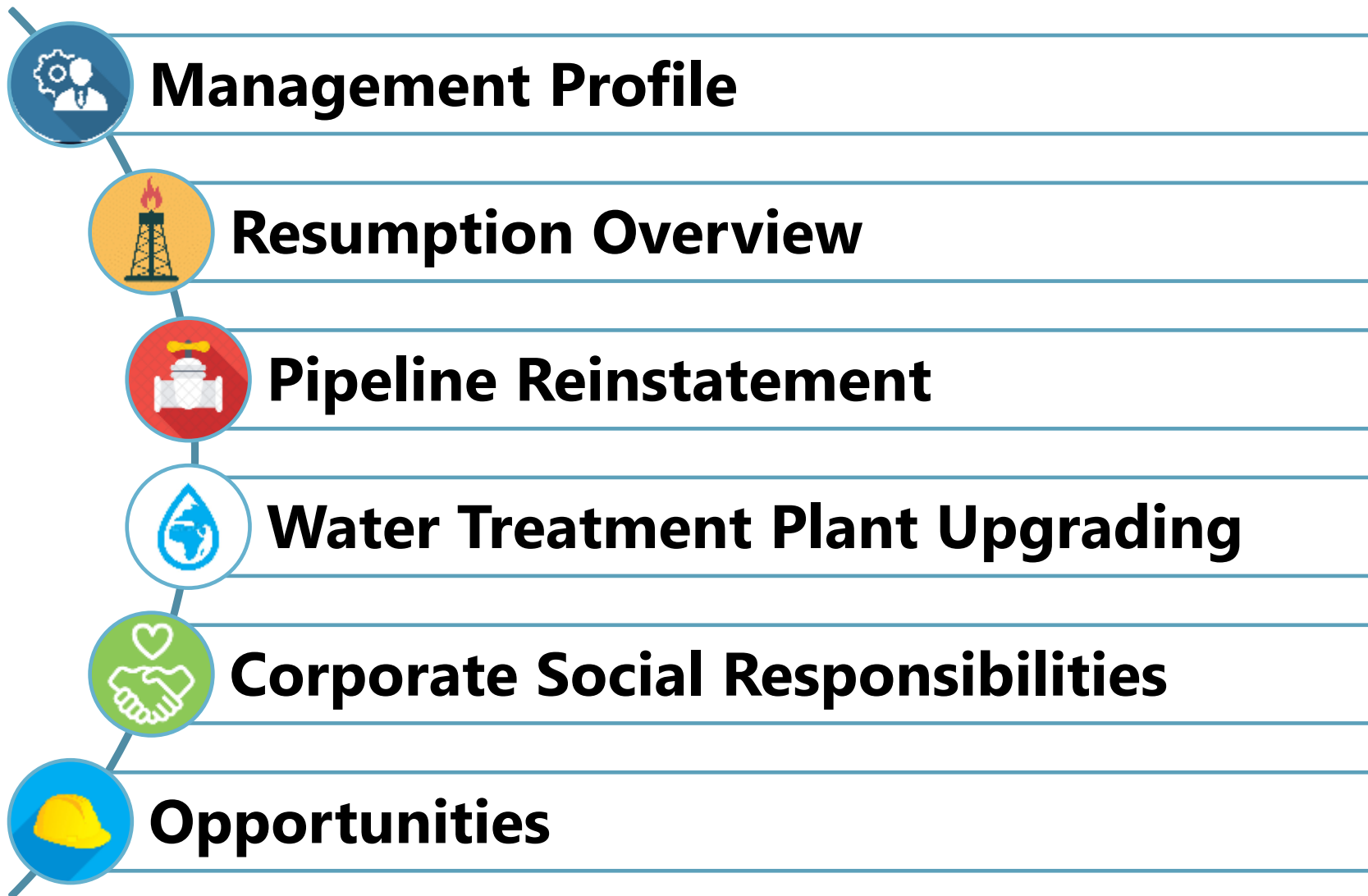
BLOCK 5A PRODUCTION RESUMPTION



**South Sudan Oil & Power 2021
Juba, Republic of South Sudan**

**Presented by;
Eng. Marco James**

PRESENTATION OUTLINES



COMPANY INCORPORATION



Sudd Petroleum Operating Co. (SPOC) was successfully formed as a Joint Operating Company and registered in South Sudan on 30th April 2012



PETRONAS

67.875%



Country Chairman
Mr. Anuar Ismail



ONGC Videsh Ltd.

24.125%



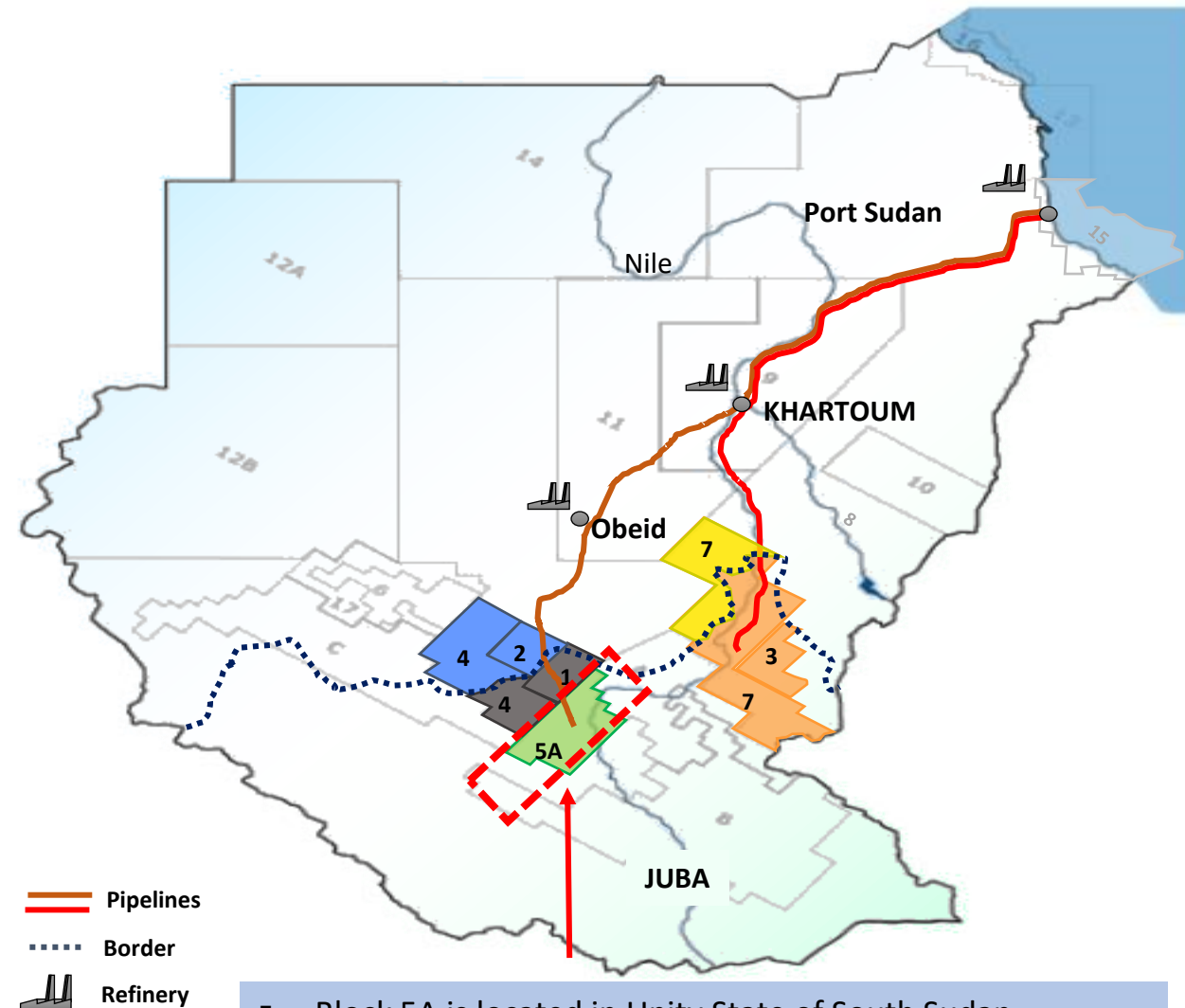
Country Manager
Mr. Rakesh Beotra



8%

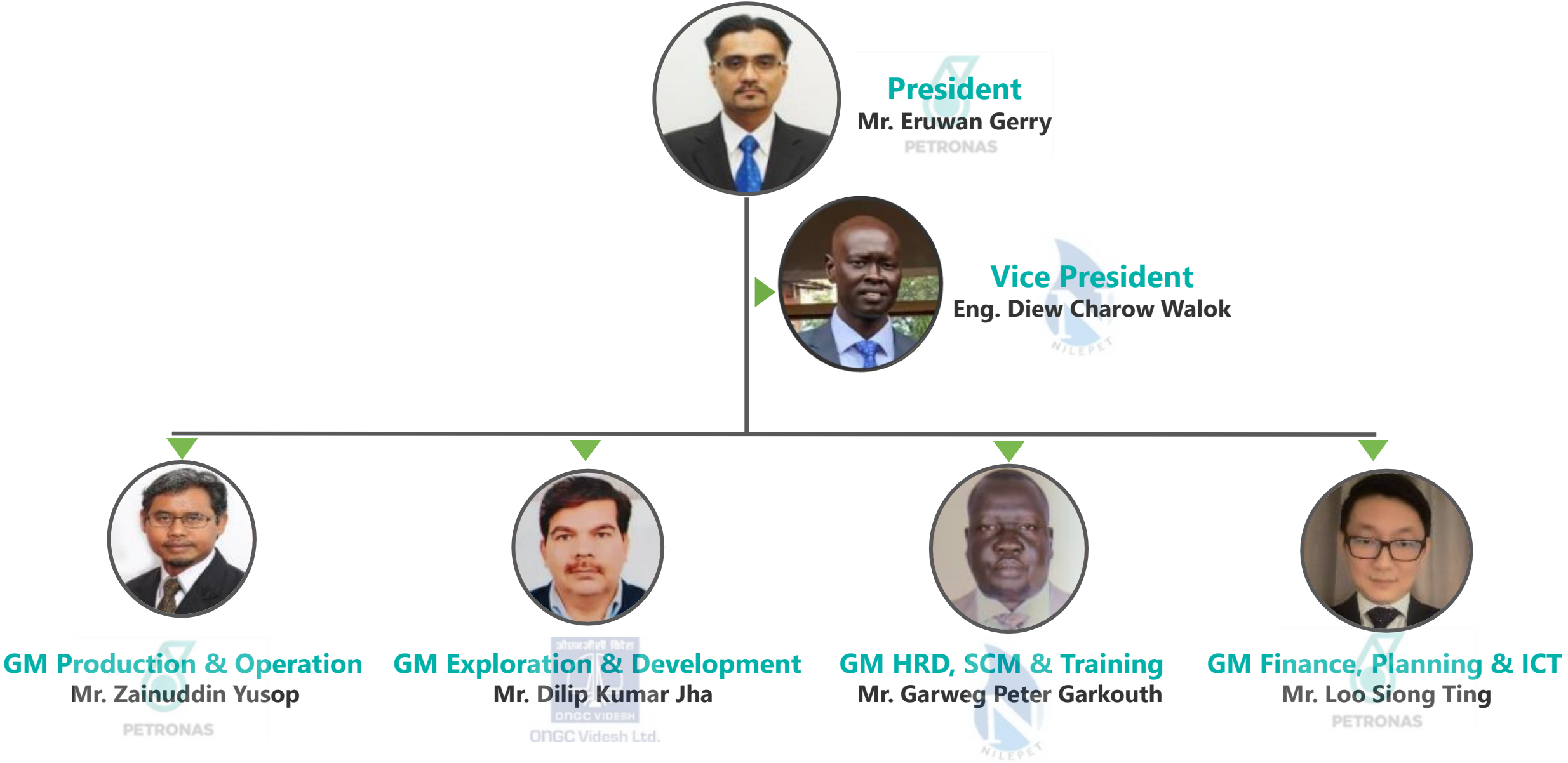


Managing Director
Eng. Bol Ring Muorwel

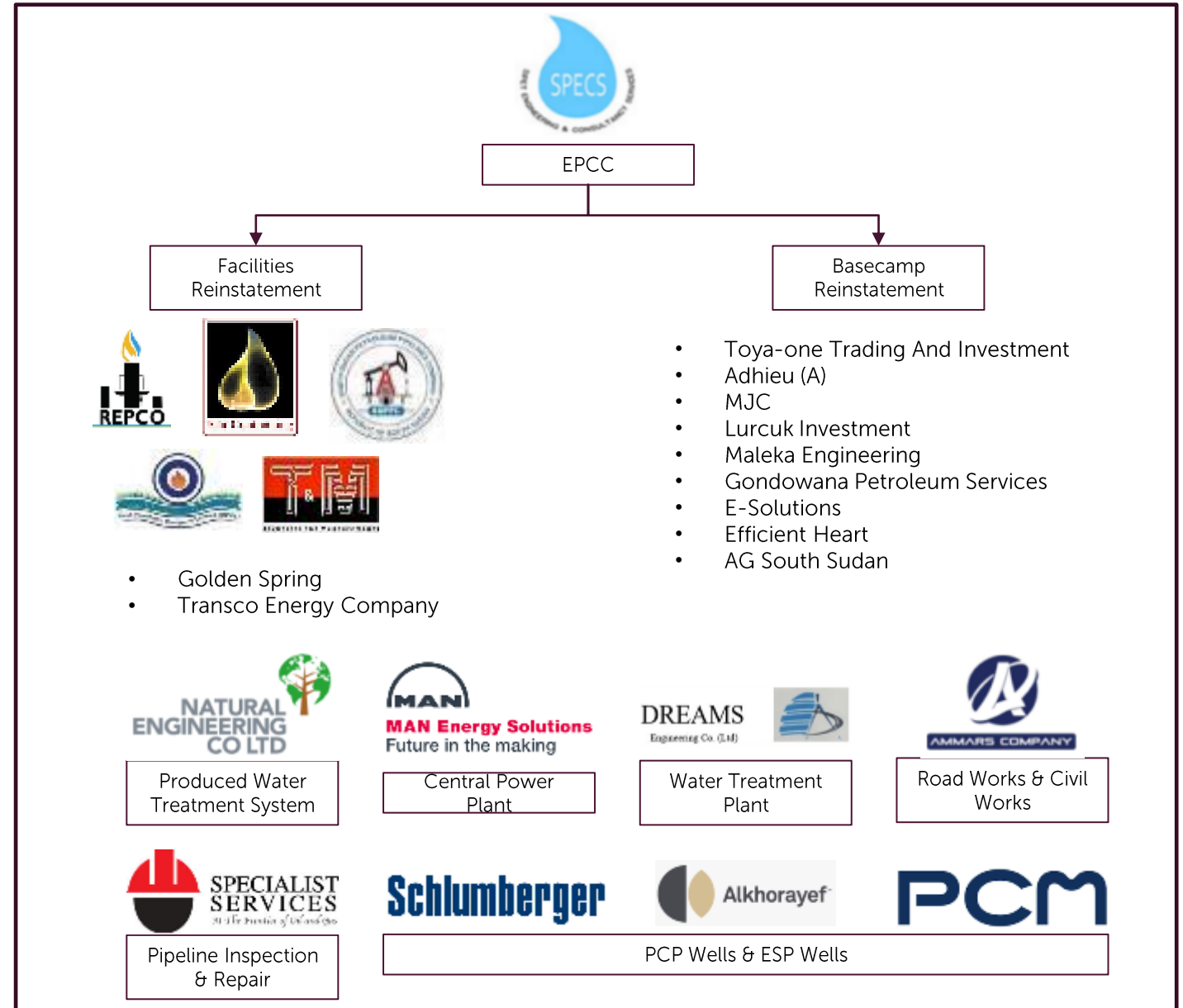
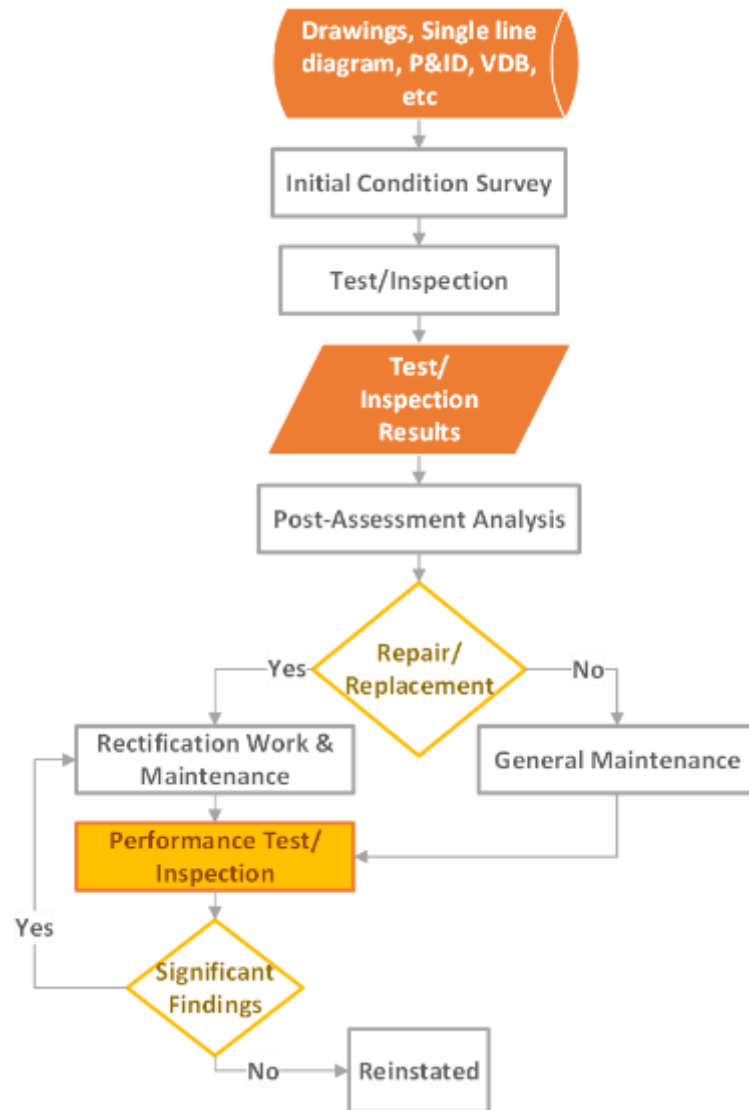


- Block 5A is located in Unity State of South Sudan
- 2 producing oil fields i.e. Tharjiath and Mala

A DIVERSE MANAGEMENT TEAM



RESUMPTION OVERVIEW: SIGNIFICANT LOCAL CONTENT DRIVE WITH A MIXTURE OF INTERNATIONAL OEM COMPANIES



PERSERVE THROUGH CHALLENGES FACED



COVID-19 PANDEMIC

Achieving smooth progression of resumption works was a challenge as COVID-19 hit South Sudan resulting to significant reduction of active manpower at site.

Mass testing is carried occasionally for early detection and control, as well as ensuring strict compliance to social distancing SOP in order to minimize the risk.



UNKNOWN EXPORT PIPELINE CONDITION

The 172km TJ-WHCC export pipeline was left in an unknown condition post the crisis back in 2013. As the pipeline laid across the South Sudan-Sudan border, cooperation between both governments are required to ensure success.

A new technology, Magnetic Tomography Method (MTM) was introduced to ensure pipeline inspection and repair are on schedule. Coordination between stakeholders from South Sudan and Sudan was also established.



DEGRADATION & OBSOLECENE

Substantial equipment degradation as the facilities were not in operation since 2013.

Unavailability of support from original vendors as the contractors are no longer in the business.



SUPPLY CHAIN DISRUPTION

Logistics firms, which are involved in the movement, storage, and flow of goods, have been directly affected by the COVID-19 pandemic.

Delivery of equipment and materials from across country borders were delayed due to travel restrictions imposed and borders closing.

KEY ACHIEVEMENTS

904,608

SAFE MAN HOURS
WITHOUT LTI
as of June 2021

0

LTI

0

Major LOPC

0

Fatality

0

Major Fire

MAGNETIC TOMOGRAPHY METHOD
(MTM) PIPELINE INSPECTION



NEW
TECHNOLOGY

ADOPTION OF GEOCELL SYSTEM
FOR EROSION CONTROL AND
SOIL STABILIZATION

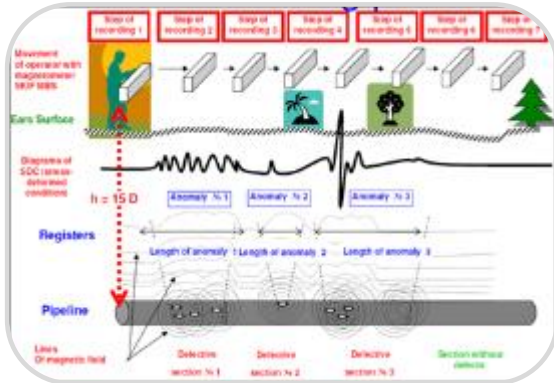


PRODUCTION RESUMPTION
OFFICIATION CEREMONY
21 JUNE 2021



MAGNETIC TOMOGRAPHY METHOD (MTM) TECHNOLOGY: 1ST OF ITS KIND IN SOUTH SUDAN AND HELPED ACCELERATED 172KM EXPORT PIPELINE INTEGRITY ASSESSMENT WORK

MTM Features



Non-contact inspection within 15m depth for onshore pipelines

Non-intrusive method – not too depending on pipeline condition/operation state.

Application of MTM



Onshore pipeline (buried and aboveground)

Offshore pipeline (subsea pipeline)

Un-piggable pipeline

Scope for Block 5A SPOC



Ground inspection of 172km trans-country pipeline with GPS mapping (148km in South Sudan; 24km in Sudan)

Signal calibration and defect verification

Key Achievements



Managed to complete 4km/day inspection.

Majority of the pipeline length were found in good condition with integrity still intact. Repairs were immediately done to identified locations.

Reinstating pipeline integrity, subsequently enabling crude export to WHCC without interruption.

WATER TREATMENT PLANT UPGRADING: BRINGING NILE RIVER DIRECTLY TO OUR COMMUNITIES

River Intake Station @ Nyaroup Port

- Connecting with White Nile River
- Pumping capacity of 90 m³/hr of raw water into the treatment plant



Water Treatment Plant @ Tharjiath

- Processing capacity of 55 m³/hr
- System comprises of
 - Chemical Dosing System
 - Clarifier Basins
 - Sand Pressure Filters
 - Chlorination System
 - Treated Water Tank



Water Testing Laboratory

Treatment plant is equipped with water testing facility to ensure the treated water meets safe drinking water quality before distribution. Lab test done by Ministry of Water Resources & Irrigation conforms that the treated water is safe for human consumption



Water Distribution to Nearby Communities

Clean water benefits more than 20,000 people surrounding Block 5A



CSR: GIVING BACK TO THE COMMUNITIES

Medical Services

Collaboration effort with State hospitals & health centers in providing primary health care services to rural areas



Rier Primary Healthcare Unit



Kuac Primary Healthcare Unit



Koch Hospital

Veterinary & Agricultural

Collaboration with Ministry of Agriculture, Forestry and Animal Resources



Veterinary Support

Agricultural Support

Education

Providing training to develop local teacher's capability and enhance teaching infrastructure
Sponsorship for students to Juba College of Nursing & Midwifery



Education Supports

Bentiu Vocational Training Centre

Clean Water Supply

Supplying clean water to the surrounding communities



Kilo 40 water supply



Guit water supply



Kuac water supply



Rier water supply



Petpet water supply

OPPORTUNITIES



Production & Operations

- Tools / Spare part supplies
- Operations / Drilling / well services
- Chemical supplies etc.
- Road construction
- Civil works



HSE & Security

- Personal Protective Equipment (PPE)
- Firefighting equipment
- Medicine supplies
- Security services, CCTV etc.
- Grass cutting and Fireline



Office / Base Camp Supplies

- Supply of Office / Camp Consumable items
- Catering, Cleaning
- Building repair & maintenance
- Warehouse
- Water treatment & RO



Inspection & Maintenance

- Inspection & Maintenance System
- All instrumentation works at CPF/CPP/FSF
- All electrical works at CPF/CPP/FSF
- Mechanical equipment at CPF/CPP/FSF
- Pipeline



Logistic & Transportation

- Passenger / commercial aircraft
- Cargo aircraft
- Diesel supply
- Inland transportation
- Vehicle procurement / maintenance
- Forwarding



Support Services

- Manpower services
- Medical / Life / Energy Insurances
- Travelling, Hotel arrangement
- Technical Software, ICT, Internet services
- Accounting, Audit services
- Digitalization



THANK YOU